

HESTIA BY

PAUL AGNEW | DESIGNS

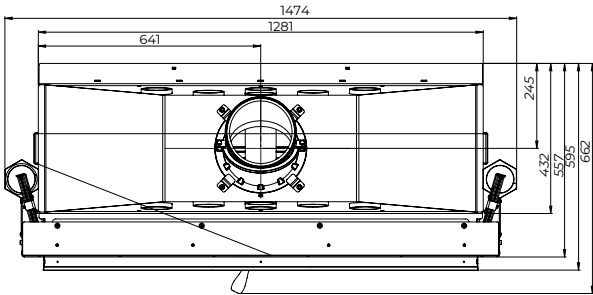
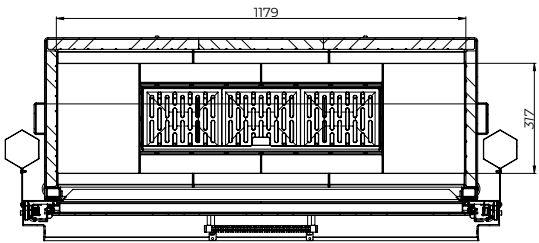
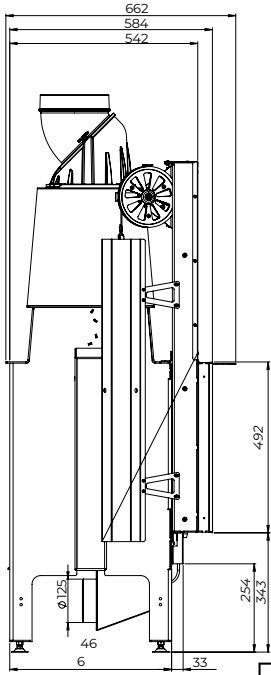
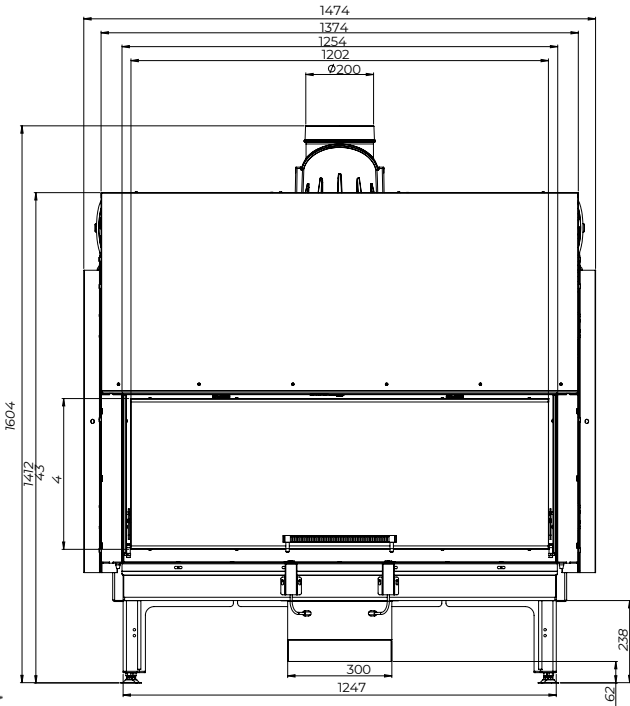
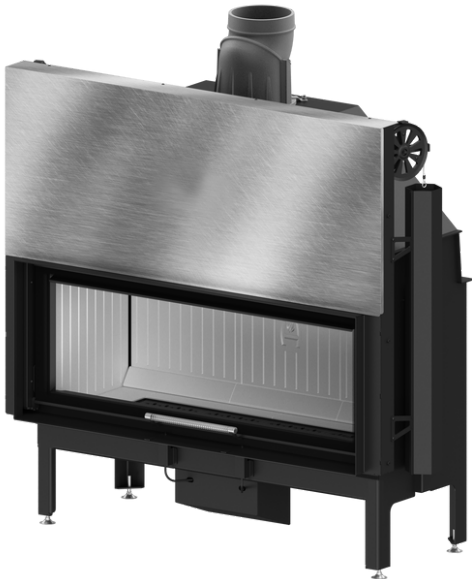


Hestia 1400 Guillotine Glass Fronted

Hestia 1400 Guillotine Glass Fronted



LIVING FIRE



Door Size (mm)	1254 x 492
Flue Diameter (mm)	200
Weight (Kg)	435



LIVING FIRE

359-361 Swan St, Richmond VIC 3121 | 148-150 Cochranes Rd, Moorabbin VIC 3189

www.livingfire.com.au | info@livingfire.com.au